

## Jasmine Smart Switch Configuration Guide

**Document Version:** 1.0 **Product:** Jasmine Smart Homes App & Compatible Appliances

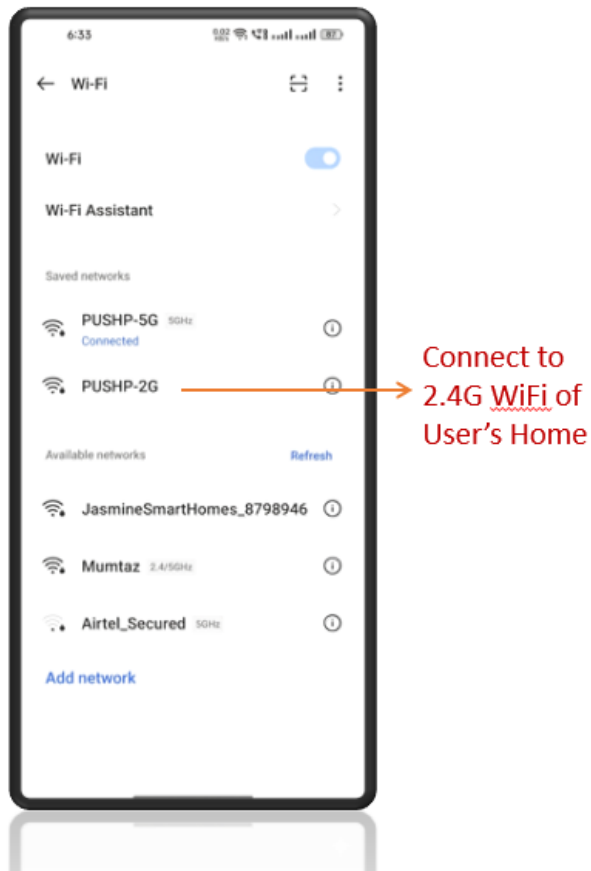
### 1. Overview

This manual provides step-by-step instructions for pairing and configuring your new Jasmine Smart appliances with your home network. Please follow these instructions carefully to ensure a seamless integration into your Jasmine Smart Homes ecosystem.

### 2. Prerequisites

Before beginning the pairing process, please ensure the following:

- Your smartphone is currently connected to a **2.4GHz Wi-Fi network**. (*Note: 5GHz networks are not supported for the initial device setup*).

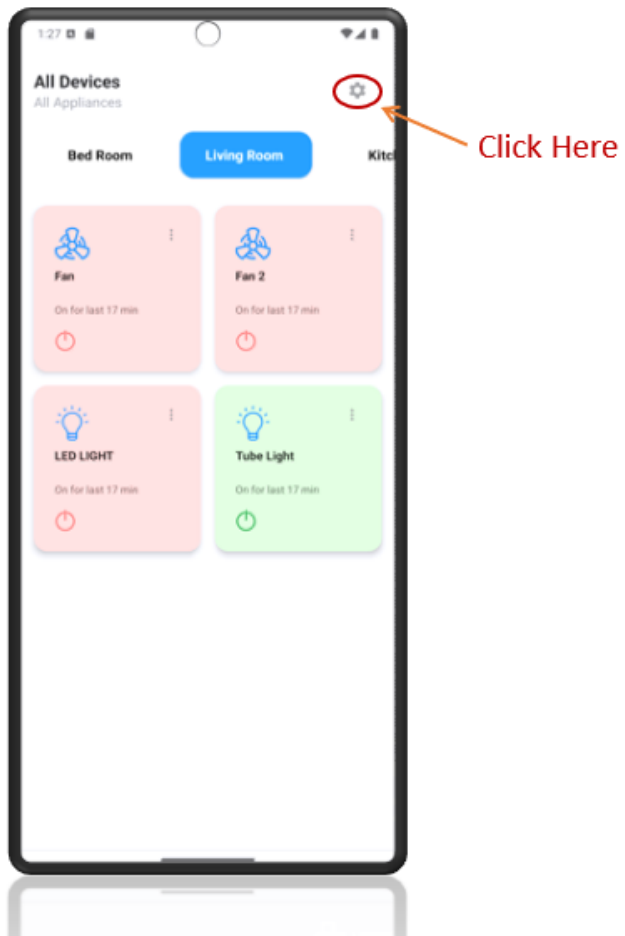


- You have the **Jasmine Smart App** installed and are logged into your profile.
- The smart appliance is powered on.

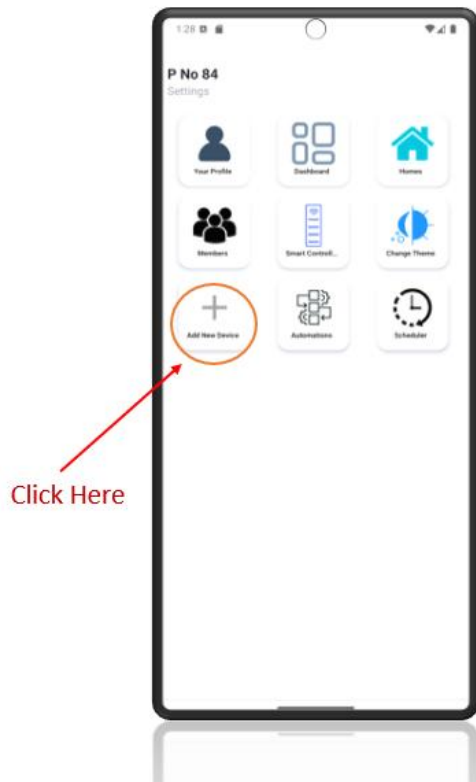
### 3. Configuration Steps

#### Phase 1: Network Discovery

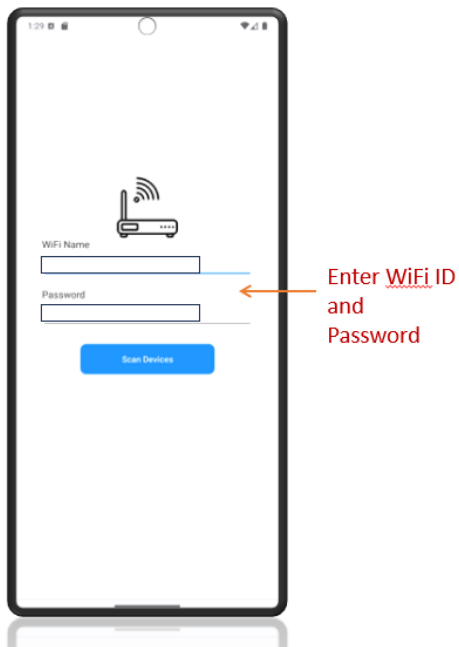
1. **Launch the Application:** Open the Jasmine Smart App on your mobile device



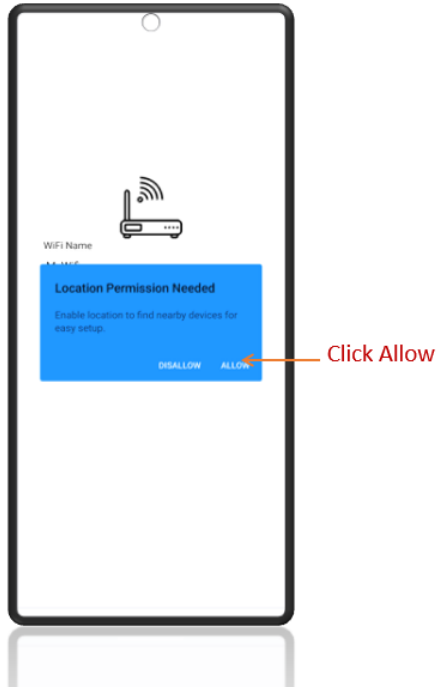
2. **Initiate Setup:** From the Settings, tap the "+" icon or the **Add New Device** button.



3. **Enter Credentials:** In the provided fields, input your home Wi-Fi SSID (Name) and Password.



4. **Scan:** Tap the **Scan Devices** button.
5. **Grant Permissions:** If prompted with a "Location Permission Needed" dialogue, select **ALLOW**. This is required for the app to detect nearby devices.

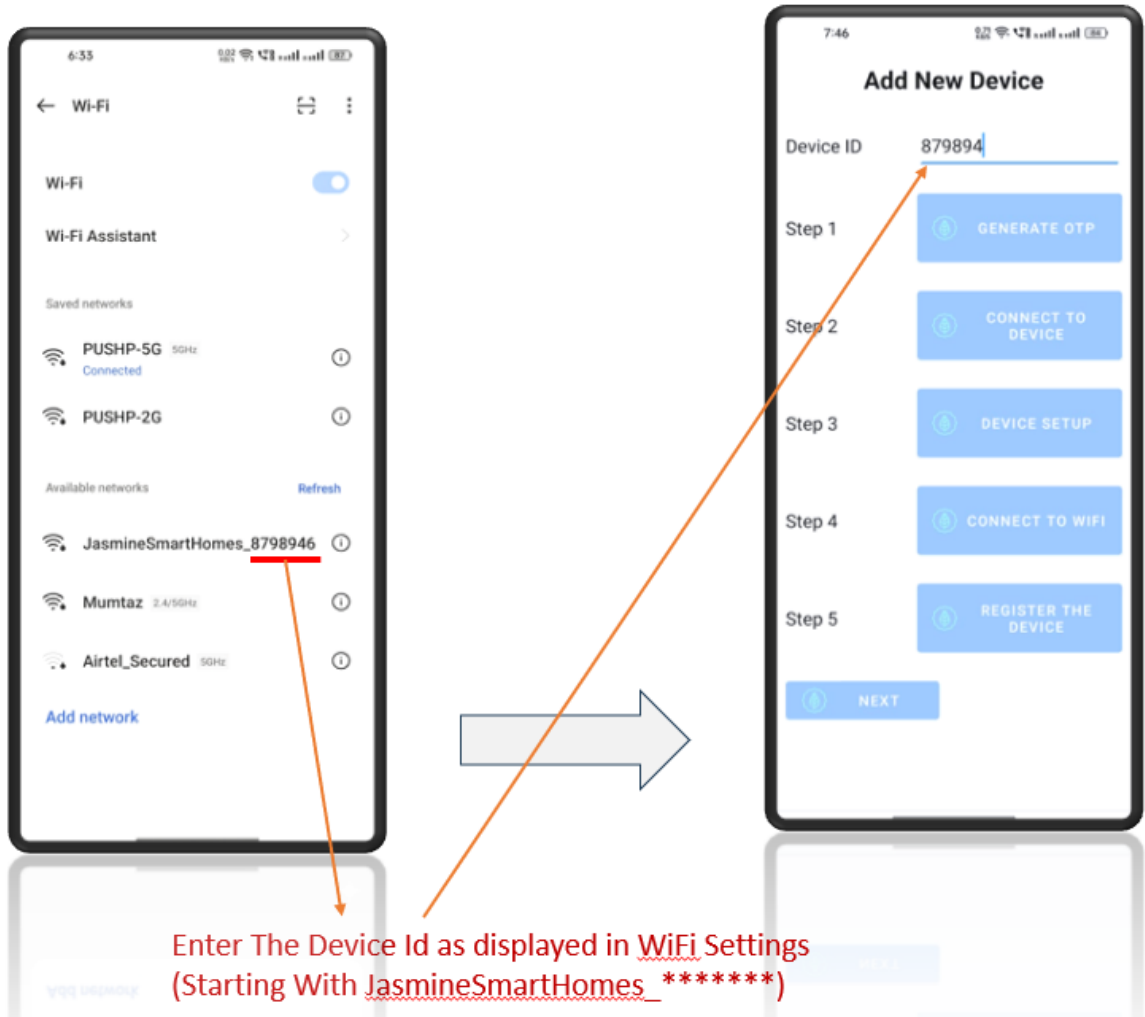


6. **Wait for Scan:** Allow the app to complete the "Searching for nearby Smart Device" process or Click on the Progress bar.

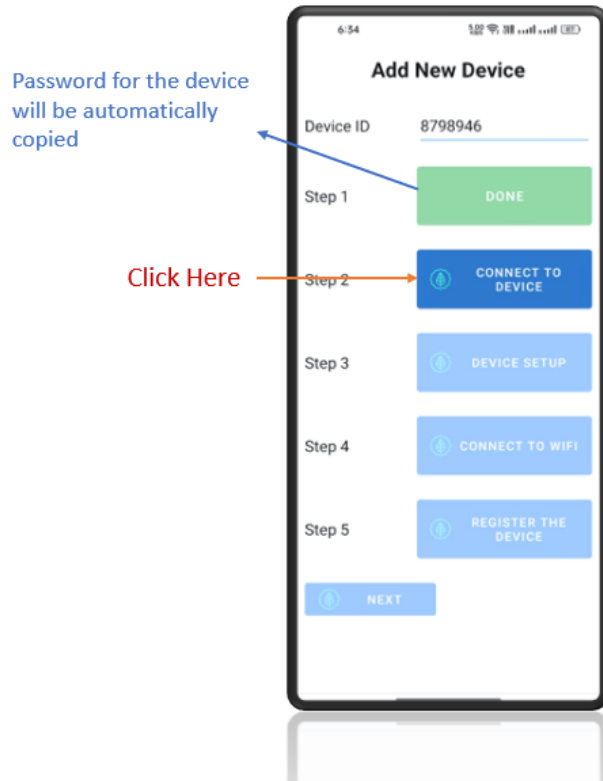


## Phase 2: Device Identification

1. **Locate Device ID:** Temporarily navigate to your smartphone's system **Wi-Fi Settings**. Look for a newly available network starting with `JasmineSmartHomes_` followed by a 7-digit number (e.g., `JasmineSmartHomes_8798946`).
2. **Record ID:** Note this 7-digit number; this is your Device ID.



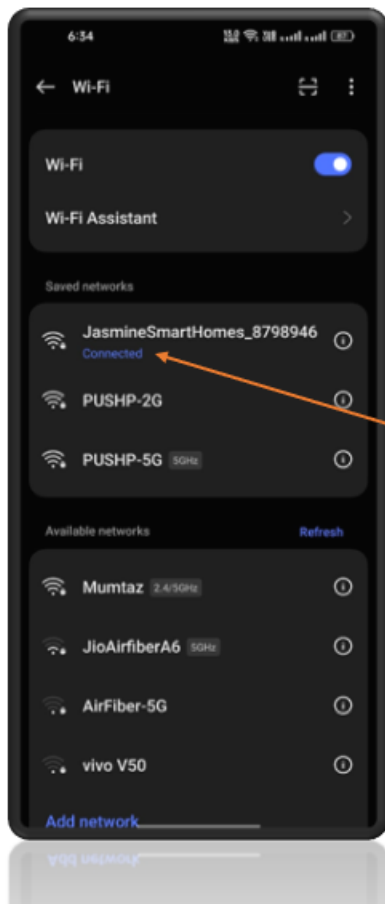
3. **Enter Device ID:** Return to the Jasmine Smart App and type the 7-digit number into the **Device ID** field.



4. **Generate Credentials:** Tap **Step 1: GENERATE OTP**.
  - o *Note: The system will automatically generate a password for the device and copy it to your smartphone's clipboard.*

### Phase 3: Establishing Direct Connection

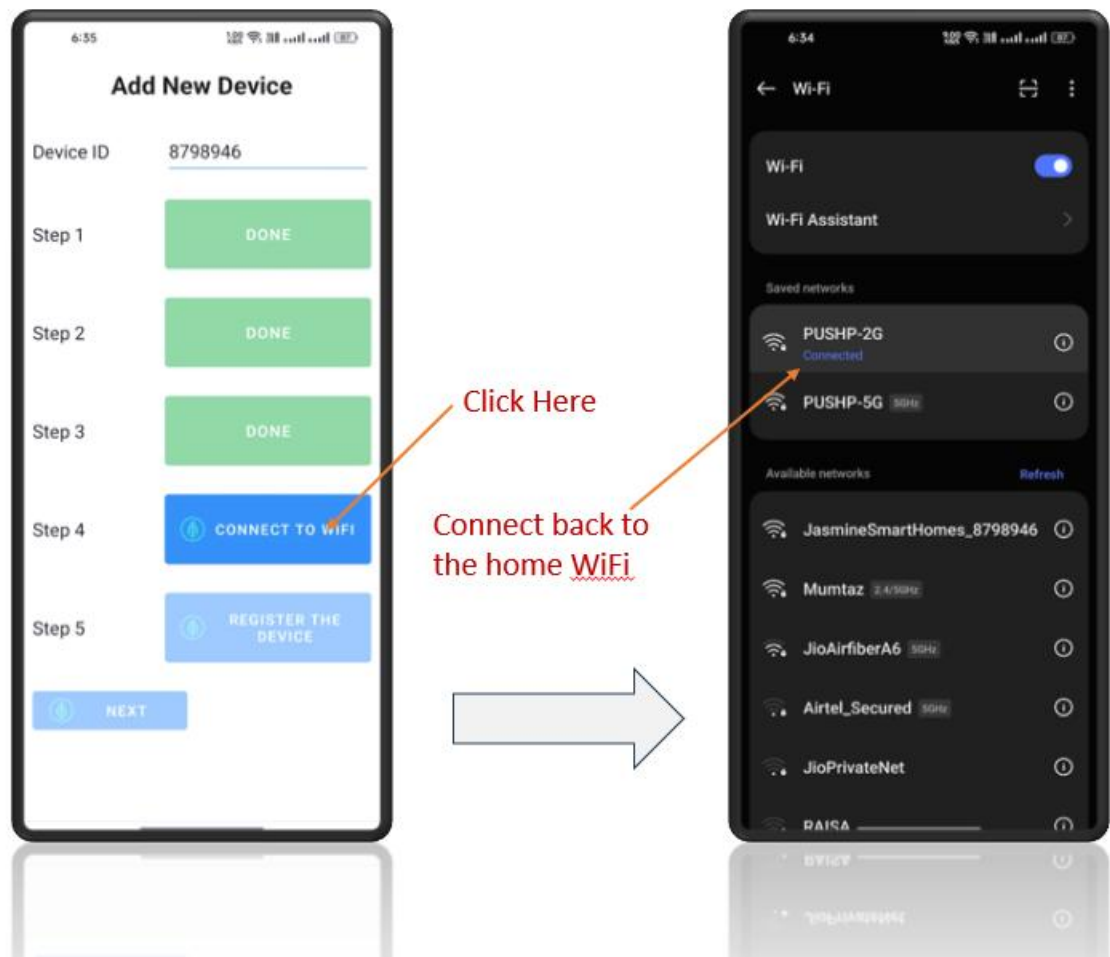
1. **Prepare Connection:** In the app, tap **Step 2: CONNECT TO DEVICE**.
2. **Connect to Appliance:** Navigate back to your smartphone's system **Wi-Fi Settings**.
3. **Authenticate:** Select the JasmineSmartHomes\_\*\*\*\*\* network. When prompted for a password, **Paste** the password that was automatically copied to your clipboard in the previous phase, and connect.



Click On the Device Wifi, Paste the password and connect

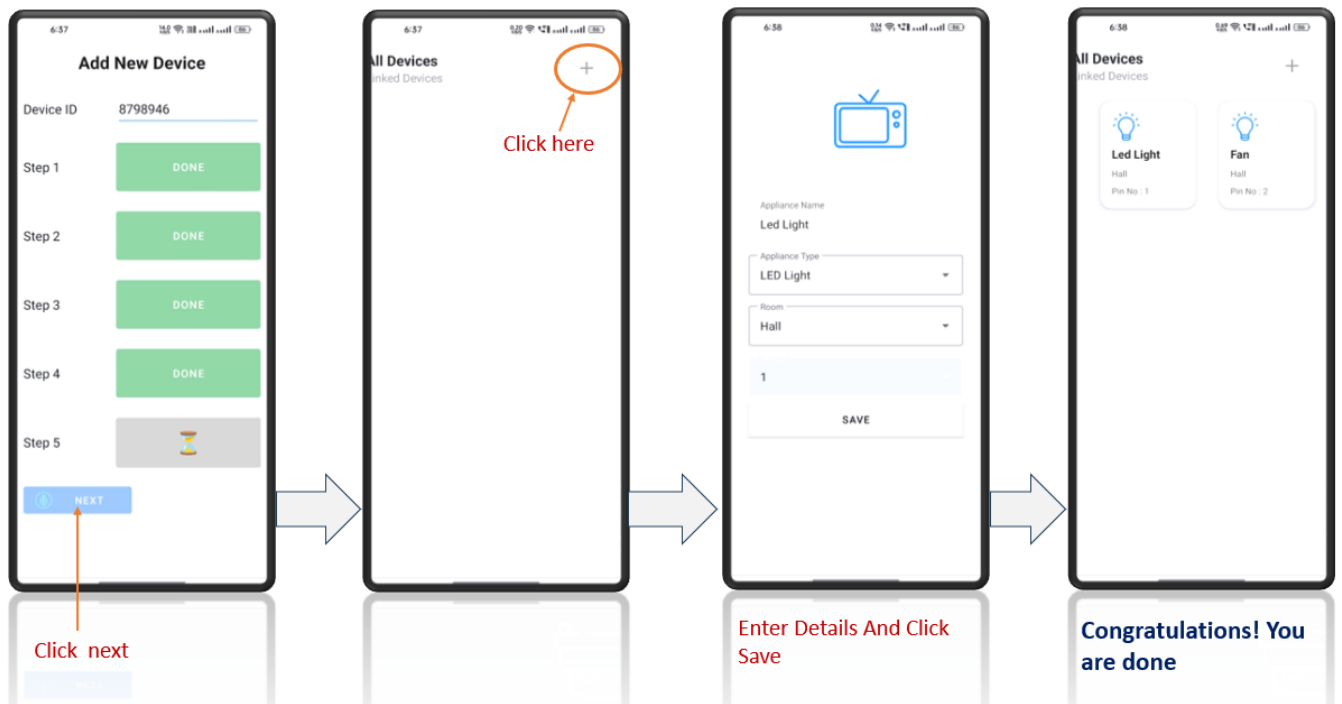
## Phase 4: Final Network Routing

1. **Verify Setup:** Return to the Jasmine Smart App. Ensure that *Step 3: DEVICE SETUP* is automatically marked as **DONE**.
2. **Route to Home Wi-Fi:** Tap **Step 4: CONNECT TO WIFI**.
3. **Reconnect to Home Network:** Navigate to your smartphone's system **Wi-Fi Settings** one last time and reconnect to your standard home Wi-Fi network.



## Phase 5: Device Registration

1. **Proceed to Registration:** Return to the Jasmine Smart App. The interface should now highlight *Step 5: REGISTER THE DEVICE*. Tap **NEXT**.
2. **Assign Device Details:** On the configuration screen, input the following operational details for your new appliance:
  - **Appliance Name:** (e.g., Led Light, Ceiling Fan)
  - **Appliance Type:** (Select from the dropdown)
  - **Room:** (e.g., Hall, Bed Room, Kitchen)
  - **Pin No:** (Assign the corresponding hardware pin number)
3. **Save Configuration:** Tap **SAVE** to complete the process.



**Congratulations!** Your Jasmine Smart appliance is now successfully paired and ready to be controlled via your application dashboard.